

BIOSPONGE GLYCOENERGIZER

Energy Time Release System

INCI NAME:

Aqua (Water), Glycerin, Glycogen, Nylon 12

DOSE OF USE:

3% to 10%

SOLUBILITY:

Insoluble in oils and water.

COSMETIC USE:

BIOSPONGE GLYCOENERGIZER is indicated for the following treatments (**Make-up**, in creams, emulsions, gels,...)

- Treatments for stress and tired skins
- Sun care preparations
- Energizing treatments
- Cosmetic treatments to increase oxygen consumption
- Anti-age and anti-wrinkle treatments
- Post depilation preparations

DESCRIPTION:

BIOSPONGE GLYCOENERGIZER is a new cosmetic compound based on spherical/oval micro particles of an average homogeneous size (5 to 20 μm), loaded with a concentrated energetic source.

Each particle is a micro-sponge, a micro-vector whose composition is the following:

- The micro-particle container is made up with a neutral polymer with a synthetic origin (polyamide), inert and stable and with an excellent local tolerance. Each micro-particle is formed by a micro-canal net destined to receive the active ingredient and release it in a progressive form, allowing time delay and progressive effect.

Chrono-cosmetic

- The content is **GLYCOENERGIZER**, a concentrated solution of highly-purified **marine glycogen**. The Glycogen plays an important role in the epidermal cells at their metabolism activities, as a reserve energetic source.

Presenting GLYCOENERGIZER in a micro-vector offers considerable advantages due to the following:

1. A **progressive release** of GLYCOENERGIZER, which result in a time delay, long lasting effect. The ingredients progressive release into the outside of the micro-particles is achieved through trans-matrix diffusion.
2. Glycoenergizer Protection: thanks to its structure, composition and preparation, this active ingredient, which is linked to this micro-vector, is protected from the outside environment and its interactions.

PROPERTIES:

Regarding its structure, BIOSPONGE GLYCOENERGIZER is presented in micro-particles which provide a remarkable velvety sensation.

This is due to its polyamide matrix which creates a soft pleasant effect on the skin.

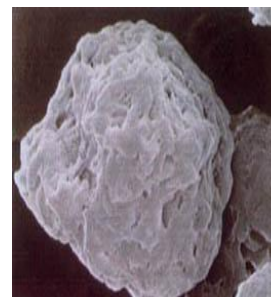
These micro-particles do not have an occlusive effect, allowing the natural physiologic interchanges of gas and liquids thru the skin and the environment.

MECHANISM OF ACTION

When a cosmetic preparation with BIOSPONGE GLYCOENERGIZER, is applied on the skin, the micro-particles, due to its size, stay at the external epidermic layers surface. The microsponges contents trend to be diffused over the cutaneous hydro-lipidic film.

The facts that modulate the GLYCOENERGIZER release into outside of the micro-sponge in controlled way are:

- The interaction between GLYCOENERGIZER and micro-sponge micro-canals net.
- The internal micro-net fragility.
- The micro-net absorption phenomenon.



N a t u r a l l y E f f e c t i v e